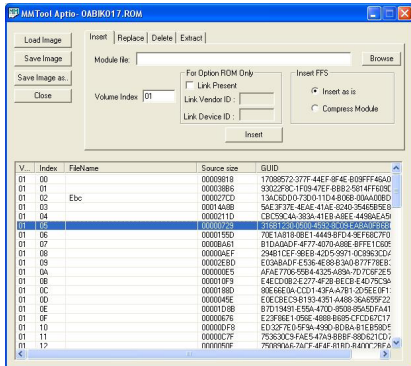


## Aptio® Utilities



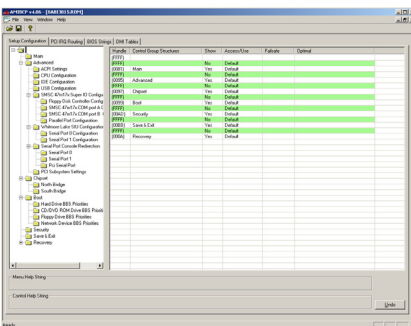
The Aptio® firmware offers an easy transition to the new Unified Extensible Firmware Interface (UEFI) model. With Aptio, OEMs have all the advantages of UEFI - modularity, portability, C-based coding - while retaining easy-to-use tools that facilitate manufacturing and enhance productivity. Aptio offers a rich set of utilities for customizing the BIOS ROM image without rebuilding the firmware: a real advantage in terms of time and cost.

### AMI Flash Utility (AFU)

AMI Firmware Update (AFU) is a scriptable command line utility for DOS, Microsoft Windows, Linux, FreeBSD and the UEFI Shell. Utilized for factory or field BIOS updates, AFU is flexible enough to update the entire flash part or only a portion. It programs the main BIOS image, boot block or OEM configurable ROM regions.

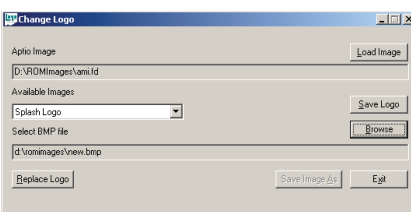
### ChangeLogo

Displaying either a GUI or a command line interface, ChangeLogo allows developers to easily change logos displayed by Aptio at boot. The full screen "splash" logo and small logos appearing on the main screen during POST can be replaced with custom logos. ChangeLogo also allows logos to be extracted from existing Aptio ROM files.



### DMIEdit

DMIEdit is a scriptable command line utility for DOS, Microsoft Windows and the UEFI Shell. The Desktop Management Interface Editor for Aptio enables customers to modify strings associated with platform SMBIOS tables (System, Base Board, Chassis, OEM String...). DMIEdit can also be used in manufacturing to embed platform serial numbers, UUID and license keys into the SMBIOS table, which identifies platforms with management software.



### MMTool

The Aptio Module Management Tool (MMTool) allows developers to manipulate Option ROMs and the UEFI DXE drivers embedded in an Aptio ROM image. MMTool allows developers to extract, replace and insert these binary components using a graphical or command line interface.

### AMIBCP

The AMI BIOS Configuration Program (AMIBCP) for Aptio enables customers to modify parameters in a BIOS ROM without rebuilding from source:

- Modify default values for BIOS setup parameters
- Modify default boot order in BIOS setup
- View and edit sign-on and setup strings
- Multilanguage string support
- Edit SMBIOS string data

### AMISDE

A command line tool for exporting setup data from an Aptio ROM image, AMISDE is suitable for importing into a spreadsheet application such as Microsoft Excel. It generates a helpful summary report of BIOS setup parameters and default values that enhances productivity in testing and manufacturing.

### AMISLP

AMISLP allows the insertion of Microsoft System Locked Pre-installation (SLP) key files into the BIOS image. SLP keys are used for OEM activation of Microsoft Windows.



American Megatrends Inc.  
 5555 Oakbrook Parkway, Suite 200  
 Norcross, GA 30093 | t: 770.246.8600  
 Sales & Product Information  
 swsales@ami.com | t: 800.828.9264  
 Technical Support  
 support@ami.com | t: 770.246.8645  
 www.ami.com