

## VeB: Integrated Development Environment

### A Development Environment Built Specifically for BIOS

*Faster time to market with VeB*

- Includes project configuration wizards
- Graphical IRQ routing using the PCI Wizard
- Quickly create new platforms from reference BIOS source projects
- Integrated project management & source control interfaces

### Works with Both Aptio and AMIBIOS8

*Enhance customers' transition from AMIBIOS8 to Aptio*

- Common development environment for AMI
- Quickly transition from BIOS projects to UEFI

### Modular Project Management

*Leverages the eModule model*

- View projects by source tree or eModules
- Add eModules to existing projects using VeB's source control integration

### Integrated Source Control Support

*Native support for multiple database formats*

- AMI Remote Source Control (RSC) for direct customer access to source
- Full source & project management within VeB

*Available as a standalone program or Visual Studio plugin*

### Stable and Modern BIOS Development

Visual eBIOS (VeB) is a graphical integrated development environment created for product-strength firmware development. Introduced by AMI in 2001, VeB provides the advanced graphical environment for firmware development in AMIBIOS8 and Aptio.

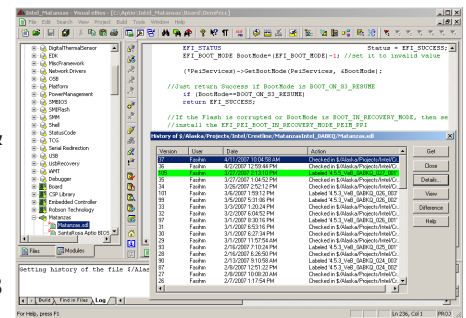
### Consistent Firmware Development Environment for BIOS and UEFI

As the centerpiece for AMIBIOS8 and Aptio development, VeB gives AMI customers the unique opportunity to transition from legacy BIOS to Unified EFI (UEFI) projects without changing their project management methodology.

### Major VeB Features

- > Build projects directly from VeB
  - > Manage project settings, view project output & capture build logs
- > Text editor with UNICODE support
  - > Includes global find & replace functions
  - > Use external editors & difference tools with VeB
- > Project Wizards
  - > Create projects based on individual eModules or reference projects
  - > eKernel table for BIOS procedure flow management (AMIBIOS8) and Framework firmware volume management (Aptio)
  - > Graphical IRQ routing using the PCI Wizard
  - > ACPI Tool simplifies ACPI Source Language (ASL) development and debugging
  - > The BIOS Parameters Wizard manages System Description Language (SDL) parameters for all eModules in an AMIBIOS8 or Aptio project
  - > New file wizards assist customers when adding functionality to projects
- > Built-in project management and source control integration
  - > Logically group related files & components as eModules (Core, Chipset, CPU, Flash, ...)
  - > Manage eModules and components using Component Information Format (CIF) files
  - > Manage library components from source control & private project components
  - > Utilize check-in, check-out, history, difference & label functions from within VeB
  - > Add components directly from source control
  - > Direct source control integration with Source Safe, PVCS, ClearCase, Dimensions, Subversion and AMI Remote Source Control (RSC)
  - > AMI RSC gives customers 24/7/365 access to AMI source repositories
  - > Download multiple components at a time
  - > One project can support multiple source control database formats

For more information, visit [www.ami.com](http://www.ami.com)



Visual eBIOS (VeB)



American Megatrends Inc.  
5555 Oakbrook Parkway, Suite 200  
Norcross, GA 30093 | t: 770.246.8600  
Sales & Product Information  
[swsales@ami.com](mailto:swsales@ami.com) | t: 800.828.9264  
Technical Support  
[support@ami.com](mailto:support@ami.com) | t: 770.246.8645  
[www.ami.com](http://www.ami.com)